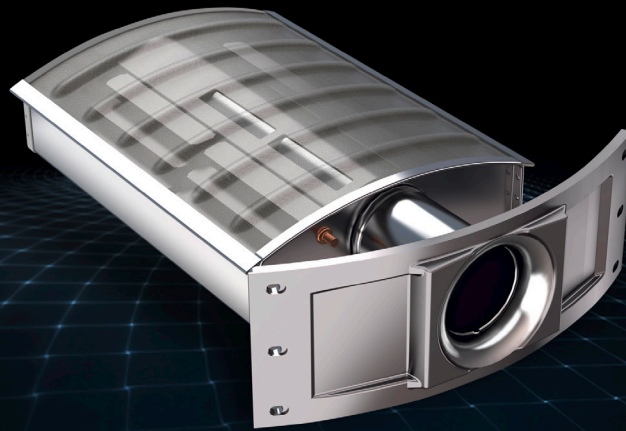


ULN Water Heater Burner



Product Overview

- Tank-style water heater burner
- Meets California and Utah ultra low NOX emissions (less than 10 ng/J or 36 mg/kWh)
- Light commercial sizes come with dual venturi inlet
- Uses high temperature Inconel screen for burner surface

Market Segments

- Residential tank water heating
- Light commercial tank water heating

Technical Specifications

- Combustion type: Atmospheric and power vent
- Residential input range: 30k - 50k Btu/h (9 - 15 kW)
 - Size range: length 8" - 12" (200-300 mm), width 7.5" (190 mm)
 - For tank sizes: 14" - 20" diameter (355 - 500 mm)
 - Material: Aluminized or stainless steel burner pan
- Commercial input range: 65k - 80k Btu/h (19 - 24 kW)
 - Size range: length 12" - 13" (304 - 330 mm), width 11.25" (285 mm)
 - For tank sizes: 20" + diameter (508+ mm)
 - Material: Stainless steel burner pan