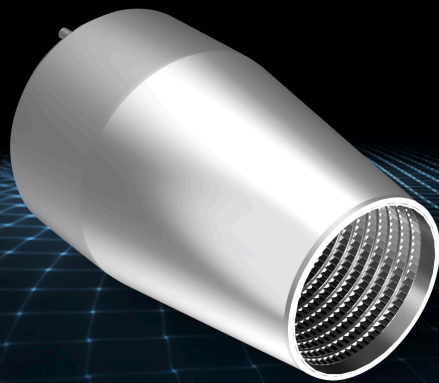


Swirl Burner



Product Overview

- Patented technology generates a swirled flame pattern
- Produces extremely low NOX emissions with higher efficiency ratings compared to other burners
- Burner materials stay very cool during combustion
- Compact design

Market Segments

- Commercial cooking
- Industrial process equipment
- Commercial water heating
- Commercial boiler

Technical Specifications

- Combustion type: Premix
- Input range: 20k - 1.2+ MBtu/h (6k - 360+ kW)
- Size range: Sized to application
- Material: Stainless steel