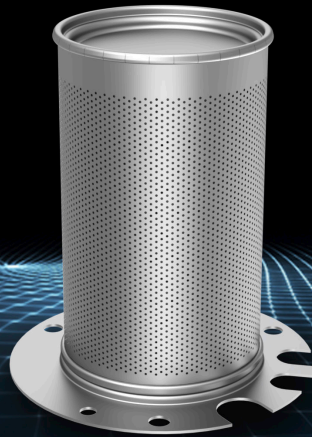


Interlock Cylindrical Burners



Product Overview

- Non-welded, mechanically interlock seam and joint construction

Market Segments

- Residential boilers
- Residential water heaters

Technical Specifications

- Combustion type: Premix
- Input range: 13k – 120k Btu/h (4 - 35 kW)
- Size range:
 - Diameter: 2.75" (70 mm)
 - Length: 3" - 5.5" (75 - 140 mm)
- Material: Stainless steel