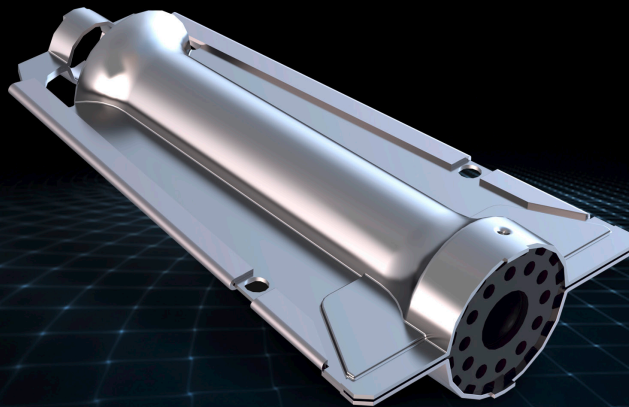


Inshot Burners



Product Overview

- Compact burner design
- Fires into tubular or clam-shell heat exchangers
- Options for high corrosion environments
- Key quality characteristics checked on each manufactured part
- Over 30 years of proven performance

Market Segments

- Residential and commercial furnaces
- Commercial cooking

Technical Specifications

- Combustion type: Induced draft
- Residential input: 7k - 33K Btu/h (2 - 10 kW)
 - Width: 2.0" - 3.0" (50 - 76 mm)
 - Length: 4.50" - 5.0" (114 - 127 mm)
- Commercial input: 35k - 75k Btu/h (10 - 22 kW)
 - Width: 2.75" - 3.25" (70 - 83 mm)
 - Length: 6.75" (171 mm)
- Material: Aluminized or stainless steel