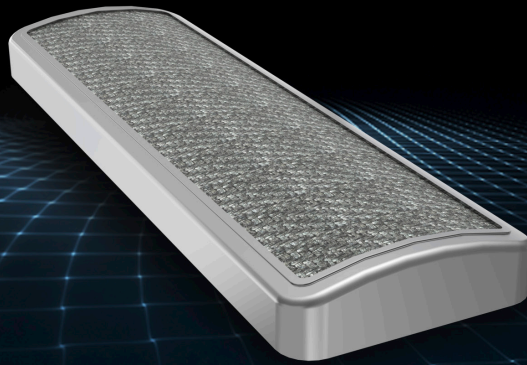


Flat Metal Fiber Burners



Product Overview

- Excellent flame retention properties
- High chromium weave allows for burner thermal expansion
- Anti-corrosive properties and high temperature resistance
- Highly stable flame in lean natural gas conditions
- Ultra low NOX emissions - less than 14 ng/J NOX (50 mg/kWh)

Market Segments

- Residential boilers
- Commercial boilers
- Residential water heaters

Technical Specifications

- Combustion type: Premix
- Input: 13k – 500k Btu/h (4 - 150 kW)
- Material: Metal fiber mesh and stainless steel