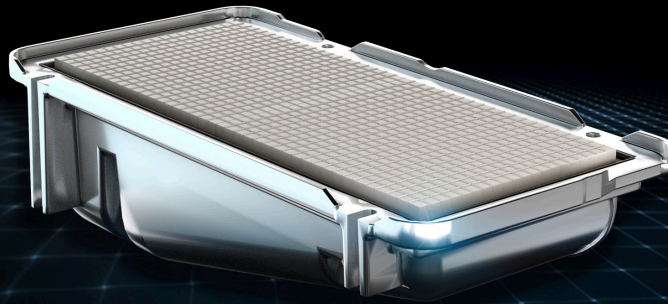


Ceramic Burners



Product Overview

- Available in aluminum die cast or steel fabricated body
- Low NOX emissions (less than 20 ng/J NOX or 72 mg/kWh)

Market Segments

- Residential boilers

Technical Specifications

- Combustion type: Premix
- Input range: 13k – 120k Btu/h (4 - 35 kW)
 - Width: 4.0" - 8.0" (100 - 200 mm)
 - Length: 7" - 12.5" (180 - 320 mm)
- Material: Ceramic, Aluminized, Stainless Steel, Die Cast Aluminum