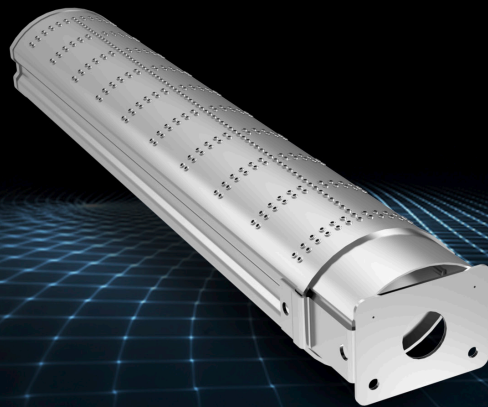


Atmospheric Tubular Burners



Product Overview

- Available in various diameters, cross sections and lengths

Market Segments

- Residential and commercial boilers
- Residential & commercial water heaters
- Commercial cooking
- Commercial dryers
- Space heaters & fireplaces

Technical Specifications

- Combustion type: Atmospheric & fan assisted
- Modulation 3:1 (50% - 30* of Nominal Rate)
- Single tube input range: 3k-140k Btu/h (1 - 40 kW)
- Size range: length of 160 – 800 mm (6" - 31")
- Material: Stainless Steel