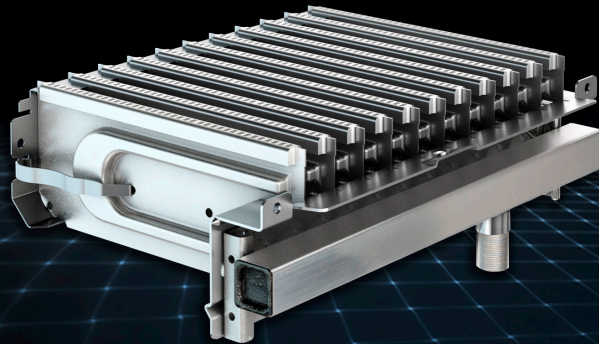


# Atmospheric Bladed



## Product Overview

- Designed with extensive use of CFD simulations
- Modular construction allows for variation in number of blades
- Fulfills EN and ANSI standards

## Market Segments

- Residential boilers
- Tankless water heaters

## Technical Specifications

- Combustion type: Atmospheric
- Size range: 5 to 20 blades each with length of 6.3" (160mm)
  - Available with .66", .74" and .80" (17mm, 19mm and 20.5mm ) blade pitch
- Input range per blade: 2.5k - 8.5k Btu/h (0.7 - 2.5 kW)
- Power output range: 13k - 170k Btu/h (4 - 50 kW)
  - Turndown ratio 1:3
- Low Noise: < 45 dB(A)
- Material: Aluminized and stainless steel